



Substitute Motion for
Warrant Article 54

Traffic visibility

Practical updates for safer streets

Annual Town Meeting 2026

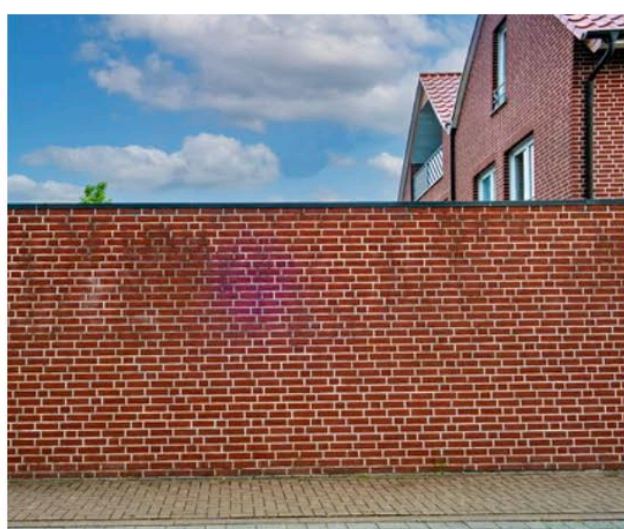
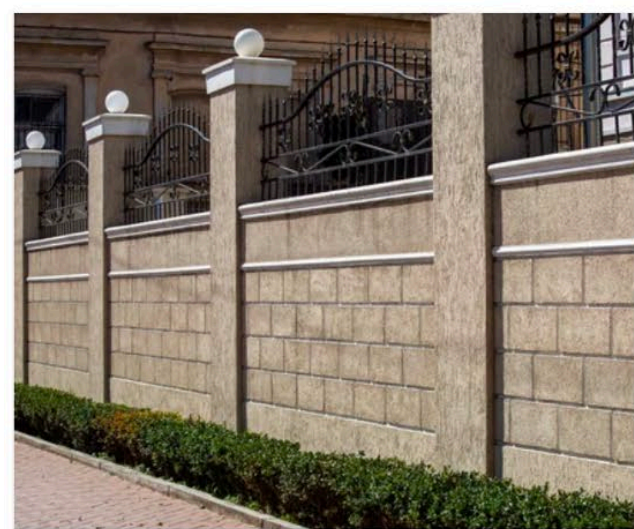
Caitlin Monaghan, TMM Pct. 8
Caitlin.E.Monaghan@gmail.com

Section 5.3.12(A) promotes traffic visibility around corners

- Applies to a triangle near the intersection in R districts
- Forbids structures over 36" except shade trees



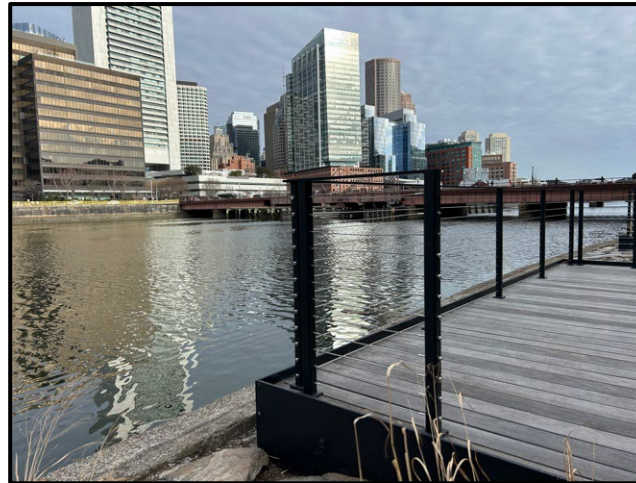
Inappropriate placement of certain types of fencing and vegetation obscures the view of traffic



Low-opacity fences over 36" are also forbidden near corners



Wrought iron on pavers, 48"
30% opaque above 36"



Cable railing, 42"
15% opaque above 36"



Ornamental aluminum, 53"
32% opaque above 36"

Safety depends on fence height



Arlington Children's Center

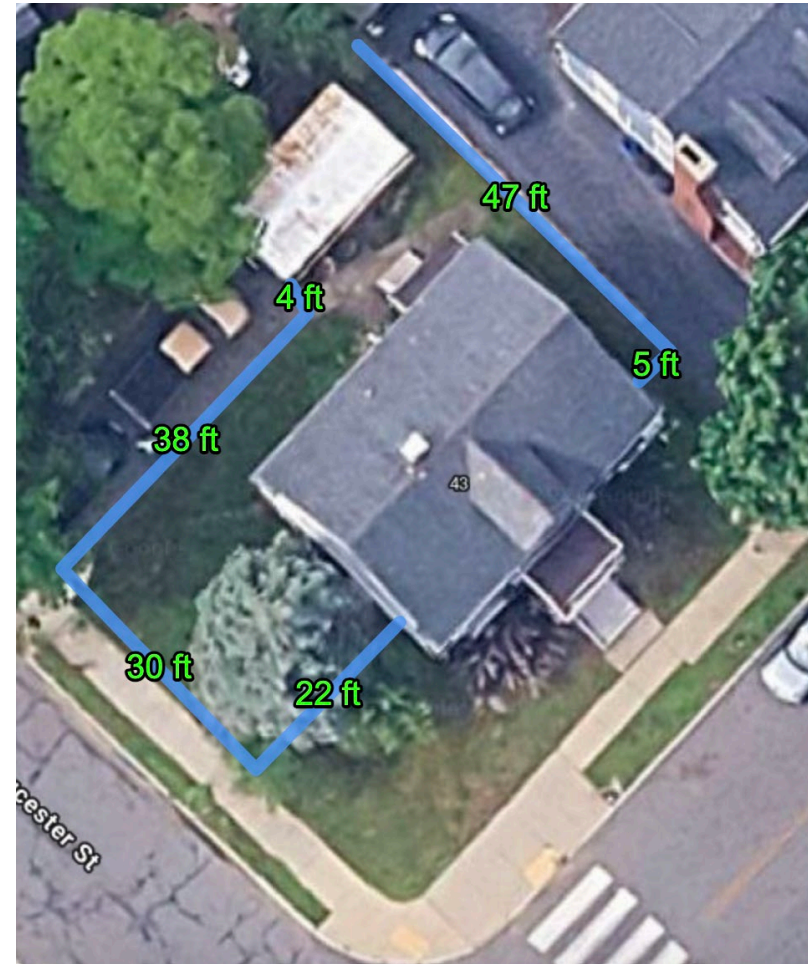


Dog jumping three-foot barrier

Compliant—but not practical



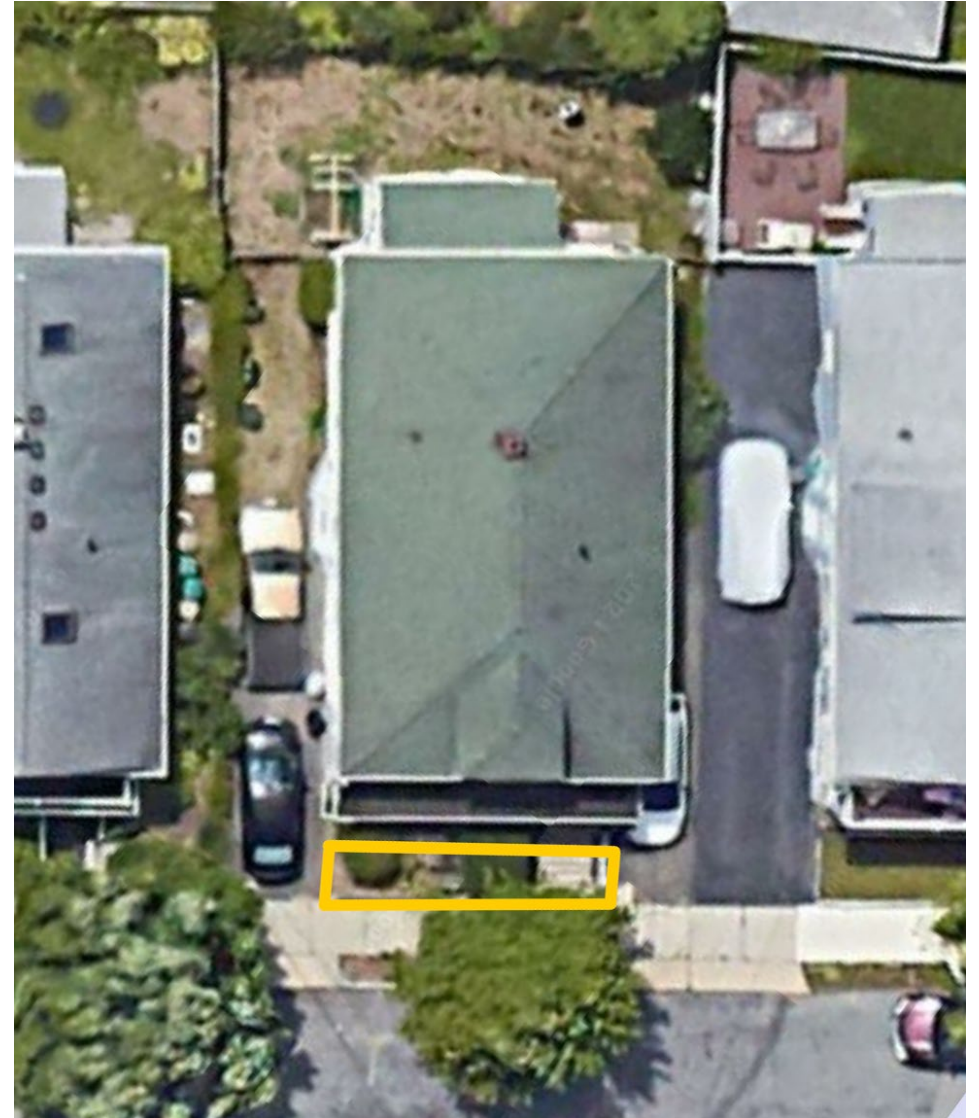
Hypotenuse fence



20-foot setback

Section 5.3.12(B) protects visibility from driveways without imposing absolute height limits

- Applies to the 60" closest to the front lot line
- Forbids structures over 30"
- Includes an exception if visibility is not hindered



Proposed changes

- Clarifies the placement of the sight triangle
- Allows fences over 36" within the sight triangle if they:
 - Do not materially impede the vision of operators of motor vehicles
 - Are less than 35% opaque

Impact of amending Section 5.3.12(A)

- Reduce risk of children and dogs entering the street
- Legalize existing safe fences
- Encourage safer, more transparent fence designs
- Eliminate the need to choose between noncompliance, variances, or reduced yard usability
- Increase bylaw's perceived legitimacy by aligning it with its stated purpose